

TARA COVE

A PORTION OF THE SOUTHEAST QUARTER OF THE SOUTHEAST QUARTER OF THE NORTHWEST QUARTER OF SECTION 13, TOWNSHIP 43 SOUTH, RANGE 42 EAST, PALM BEACH COUNTY, FLORIDA.

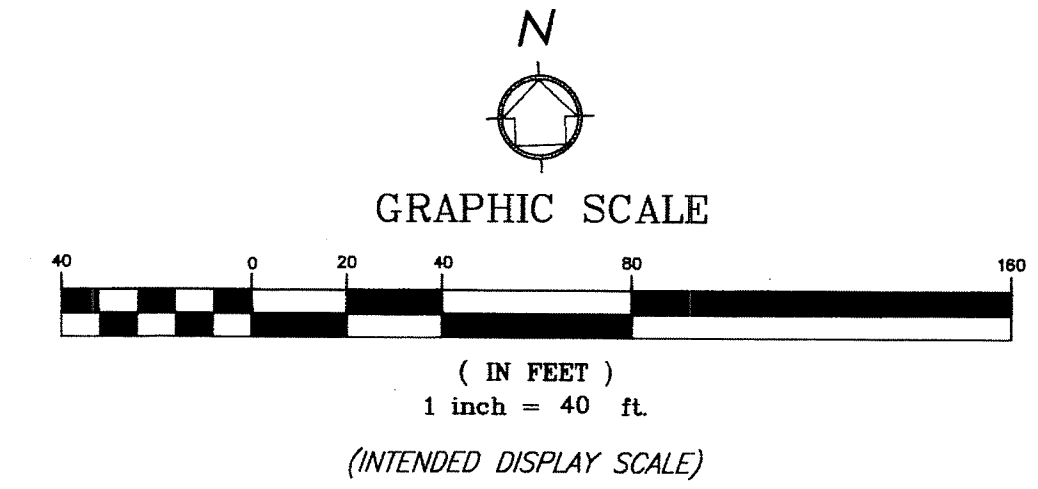
185

State of Florida }
County of Palm Beach } SS

THIS PLAT WAS FILED FOR RECORD AT _____ M.
THIS _____ DAY OF _____ A.D. 2015 AND DULY RECORDED
IN PLAT BOOK _____ THROUGH _____ ON PAGES _____ THROUGH _____
SHARON R. BOCK
CLERK AND COMPTROLLER
BY: _____
DEPUTY CLERK

SHEET 3 OF 6 SHEETS

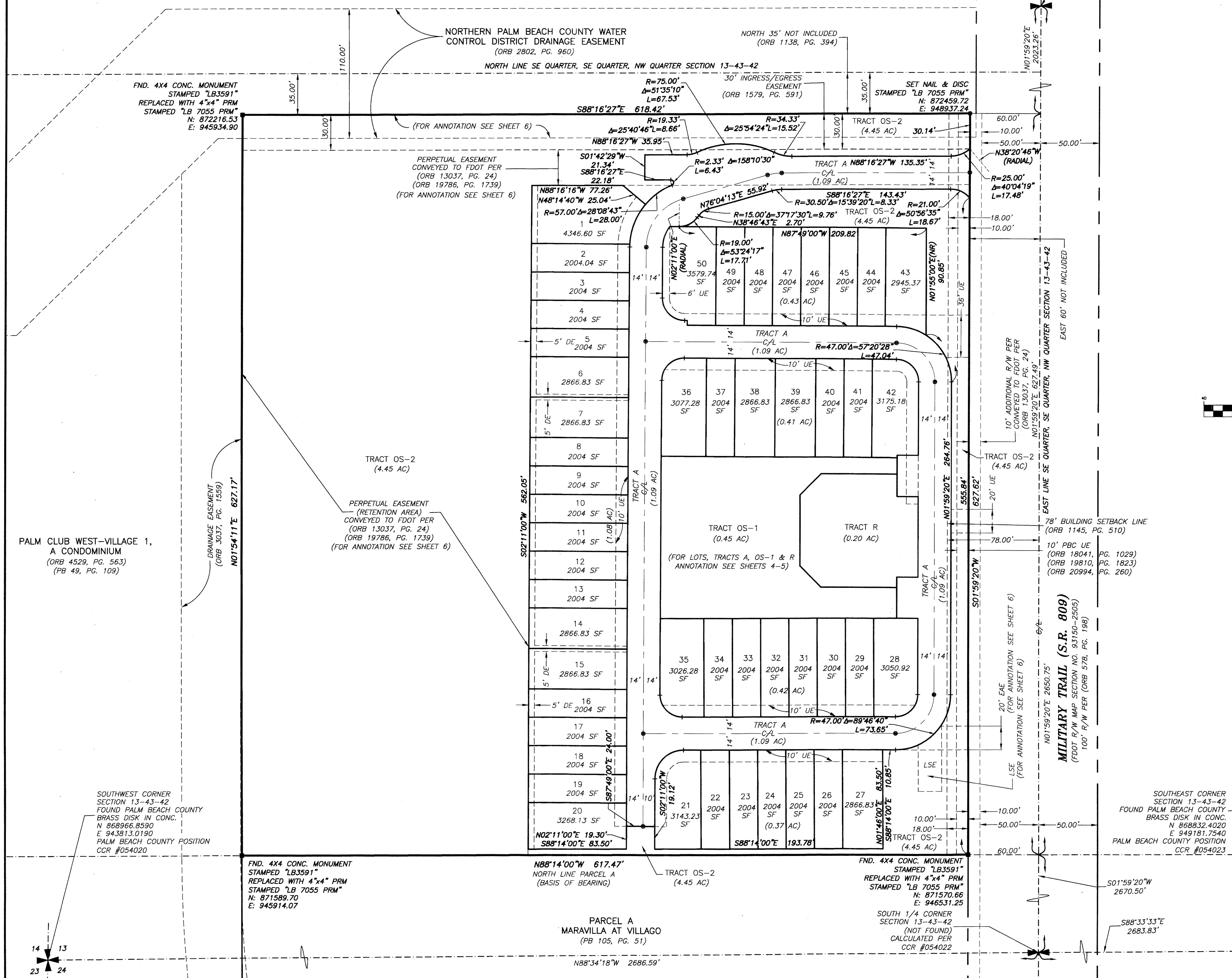
THE PALM CLUB VILLAGE 1-#1,
A CONDOMINIUM
(ORB 4039, PG. 1229)
THE PALM CLUB VILLAGE 1-#2,
A CONDOMINIUM
(ORB 4083, PG. 1564)



LEGEND:

- AC = Acres
- CB = Chord Bearing
- CD = Chord Distance
- C/L = Center Line
- CCR = Certified Corner Record
- Conc. = Concrete
- DE = Drainage Easement
- Δ = Delta (Central Angle)
- EAE = Emergency Access Easement
- FND = Found
- FDOT = Florida Department of Transportation
- L = Length of Arc
- LB = Licensed Business
- LSE = Lift Station Easement
- (NR) = Non-Radial
- ORB = Official Records Book
- PG. = Page
- PBC = Palm Beach County
- PB = Plat Book
- = Permanent Control Point (PCP)
- PRM = Permanent Reference Monument
- R = Radius
- R/W = Right-of-Way
- SF = Square Feet
- UE = Utility Easement
- = Set 4"x4" Concrete (PRM) & Aluminum Disc Stamped "LB 7055 PRM" Unless Otherwise Noted

NOTE: Lot lines intersecting circular curves are radial unless otherwise noted.



WGI
Wantman Group, Inc.

Engineering ♦ Planning ♦ Surveying ♦ Environmental

2035 VISTA PARKWAY, SUITE 100, WEST PALM BEACH, FL 33411
(866) 909-2220 phone (561) 687-1110 fax
CERTIFICATE OF AUTHORIZATION No. LB 7055
ORLANDO - PORT ST. LUCIE - TAMPA
THIS INSTRUMENT WAS PREPARED BY ERIC R. MATTHEWS, P.S.M.
PROFESSIONAL SURVEYOR AND MAPPER, LICENSE NO. 6717
FOR THE FIRM: WANTMAN GROUP, INC.